

Legend

- Roads Open to Highway Legal Vehicles
- Roads Open to All Vehicles
- Trails Open to All Vehicles
- Seasonal Designation (See Table)
- 70333 ● Short Route Identifier (See Table)
- Highways, U.S. State
- Other Public Roads
- Forest or Unit Boundary
- National Forest System Lands
- Non-National Forest System Lands within the National Forest
- WILDERNESS AREAS
- Large Lakes and Rivers
- Information Site

North American Datum of 1983 (NAD 83)
Universal Transverse Mercator, zone 10

EXPLANATION OF LEGEND ITEMS

Roads Open to Highway Legal Vehicles Only:

These roads are open only to motor vehicles licensed under State law for general operation on all public roads within the State.

Roads Open to All Vehicles:

These roads are open to all motor vehicles, including smaller off-highway vehicles that may not be licensed for highway use (but not to oversize or overweight vehicles under State traffic law).

Trails Open to All Vehicles:

These trails are open to all motor vehicles, including both highway legal and nonhighway legal vehicles.

Seasonal Designation:

This symbol, used in conjunction with one of the other road or trail symbols, indicates that the road or trail is open only during certain portions of the year. Refer to the Seasonal and Special Designation Table for further instructions.

Short Route Identifier:

70333 ●

This symbol is used for routes that are too short to show an actual symbol type on the map. The symbol contains the number of the road or trail. Users should refer to the corresponding number in the Short Route Table for designation information.

Other Public Roads and Trails:

- Highways, U.S., State
- Other Public Roads

These symbols are used to show routes the Forest Service does not have jurisdiction over and has not designated for motorized use. These symbols are part of the reference layers showing connections to towns and cities outside the forest boundary.

Short Route Table

Route	Designation	Length (miles)
36N14C	Road open to all vehicles	0.03
36N14E	Road open to all vehicles	0.10
36N25A	Road open to all vehicles	0.10
37N07	Road open to all vehicles	0.06
37N11B	Road open to all vehicles	0.30
37N11C	Road open to all vehicles	0.10
37N28YA	Road open to all vehicles	0.15
38N06A	Road open to all vehicles	0.06
39N06A	Road open to all vehicles	0.10
39N08A	Road open to all vehicles	0.15
39N14A	Road open to all vehicles	0.20
39N20Y	Road open to all vehicles	0.04
40N04L	Road open to all vehicles	0.11
40N06A	Road open to all vehicles	0.20
40N50B	Road open to all vehicles	0.11
53005	Trail open to all vehicles	0.10
53040	Trail open to all vehicles	0.22
53051	Trail open to all vehicles	0.11

INFORMATION SOURCES

Lassen National Forest Supervisor's Office
2550 Riverside Drive
Susanville, CA 96130
(530) 257-2151

Eagle Lake Ranger District
477-050 Eagle Lake Road
Susanville, CA 96130
(530) 257-4188

Almanor Ranger District
900 E. Hwy. 36 / PO Box 767
Chester, CA 96020
(530) 258-2141

Hat Creek Ranger District
43225 E. Hwy. 299 / PO Box 220
Fall River Mills, CA 96028
(530) 336-5521

Monday - Friday, 8:00 am - 4:30 pm

VICINITY MAP

The U.S. Department of Agriculture (USDA) prohibits discrimination in all its programs and activities on the basis of race, color, national origin, age, disability, and where applicable, sex, marital status, familial status, parental status, religion, sexual orientation, genetic information, political beliefs, reprisal, or because all or part of an individual's income is derived from any public assistance program. (Not all prohibited bases apply to all programs.) Persons with disabilities who require alternative means for communication of program information (Braille, large print, audiotape, etc.) should contact USDA's TARGET Center at (202) 720-2600 (voice and TDD). To file a complaint of discrimination, write to USDA, Director, Office of Civil Rights, 1400 Independence Avenue, S.W., Washington, D.C. 20250-9410, or call (800) 795-3272 (voice) or (202) 720-6382 (TDD). USDA is an equal opportunity provider and employer.

Motor Vehicle Use Map

Lassen National Forest

California 2011
Forest Service
United States Department of Agriculture

PURPOSE AND CONTENTS OF THIS MAP

The designations shown on this motor vehicle use map (MVUM) were made by the responsible official pursuant to 36 CFR 212.51; are effective as of the date on the front cover of this MVUM; and will remain in effect until superseded by next year's MVUM.

Jerry Bird, Forest Supervisor, Lassen National Forest

It is the responsibility of the user to acquire the current MVUM. This map shows the National Forest System roads, National Forest System trails, and the areas on National Forest System lands in the Lassen National Forest that are designated for motor vehicle use pursuant to 36 Code of Federal Regulations (CFR) 212.51. This MVUM also identifies the vehicle classes allowed on each route and in each area; and any seasonal restrictions that apply on those routes and in those areas.

Designation of a road, trail, or area for motor vehicle use by a particular class of vehicle under 36 CFR 212.51 should not be interpreted as encouraging or inviting use or implying that the road, trail, or area is passable, actively maintained, or safe for travel. Motor vehicle designations include parking along designated routes and at facilities associated with designated routes when it is safe to do so and when not causing damage to National Forest System resources. Seasonal weather conditions and natural events may render designated roads and trails impassable for extended periods. Designated areas may contain dangerous or impassable terrain. Many designated roads and trails may be passable only by high-clearance vehicles or four-wheel-drive vehicles. Maintenance of designated roads and trails will depend on available resources, and many may receive little maintenance.

This motor vehicle use map identifies those roads, trails, and areas designated for the motor vehicle use under 36 CFR 212.51 for the purpose of enforcing the prohibition at 36 CFR 261.13. This is a limited purpose. The other public roads are shown for information and navigation purposes only and are not subject to designation under the Forest Service travel management regulation.

These designations apply only to National Forest System roads, National Forest System trails, and areas on National Forest System lands.

MAP INDEX

On this side: Map 1a
On reverse side: Map 1b

OPERATOR RESPONSIBILITIES

Operating a motor vehicle on National Forest System roads, National Forest System trails, and in areas on National Forest System lands carries a greater responsibility than operating that vehicle in a city or other developed setting. Not only must you know and follow all applicable traffic laws, you need to show concern for the environment as well as other forest users. The misuse of motor vehicles can lead to the temporary or permanent closure of any designated road, trail, or area. As a motor vehicle operator, you are also subject to State traffic law, including State requirements for licensing, registration, and operation of the vehicle in question.

Motor vehicle use, especially off-highway vehicle use, involves inherent risks that may cause property damage, serious injury, and possibly death for participants. Drive cautiously and anticipate rough surfaces and features, such as snow, mud, vegetation, and water crossings common to remote driving conditions. By your participation, you voluntarily assume full responsibility for these damages, risks, and dangers. Take care at all times to protect yourself and those under your responsibility.

Much of the Lassen National Forest is remote. Medical assistance may not be readily available. Cellular telephones do not work in many areas of the Lassen National Forest. Take adequate food, water, first-aid supplies, and other equipment appropriate for the conditions and expected weather.

ALWAYS REMEMBER TO RESPECT PRIVATE LAND! PROTECT YOUR PRIVILEGE. STAY ON DESIGNATED ROADS AND TRAILS AND IN DESIGNATED AREAS.

Read and understand this map in its entirety. If you have questions please contact the Lassen National Forest for clarification.

As a motor vehicle operator on a National Forest System road, trail, or area, you must comply with this map, as well as all Federal, State, and local laws and regulations. Compliance with these rules is your responsibility.

PROHIBITIONS

It is prohibited to possess or operate a motor vehicle on National Forest System lands on the Lassen National Forest other than in accordance with these designations (36 CFR 261.13).

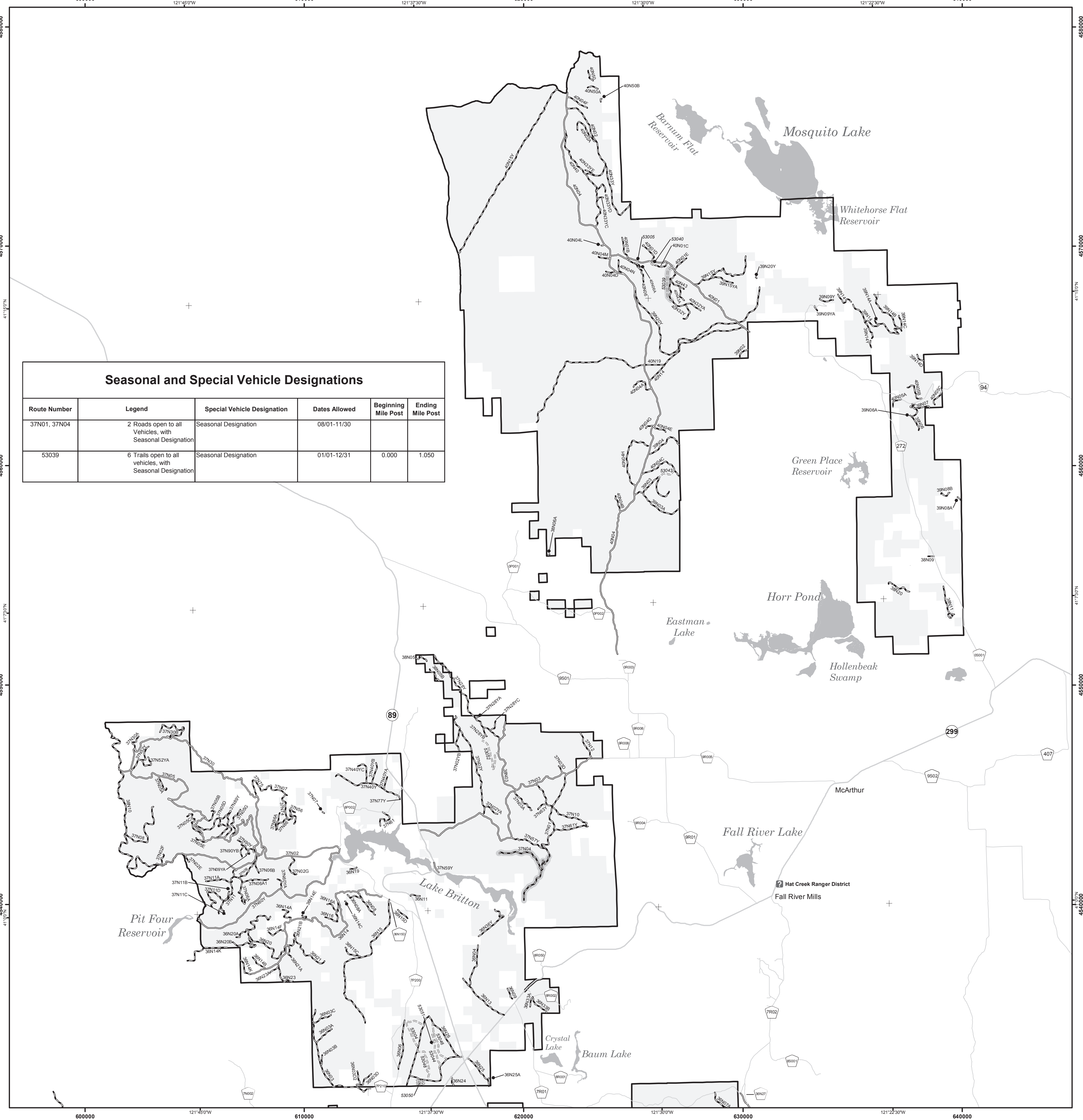
Violators of 36 CFR 261.13 are subject to a fine of up to \$5,000, imprisonment for up to 6 months, or both (18 U.S.C. 3571(e)). This prohibition applies regardless of the presence or absence of signs.

This map does not display nonmotorized uses, over-snow uses, or other facilities and attractions on the Lassen National Forest. Obtain forest visitor information from the local national forest office.

Designated roads, trails, and areas may also be subject to temporary, emergency closures. As a visitor, you must comply with signs notifying you of such restrictions. A national forest may issue an order to close a road, trail, or area on a temporary basis to protect the life, health or safety of forest visitors or the natural or cultural resources in these areas. Such a temporary and/or emergency closures are consistent with the Travel Management Rule (36 CFR 212.52 (b), 36 CFR 261 subpart B).

The designation "road or trail open to all motor vehicles" does not supersede State traffic law.

Motor vehicles may be parked within one vehicle length from the edge of the road surface when it is safe to do so without causing damage to NFS resources or facilities, unless prohibited by state law, a traffic sign, or an order (36 CFR 261.54).



Seasonal and Special Vehicle Designations

Route Number	Legend	Special Vehicle Designation	Dates Allowed	Beginning Mile Post	Ending Mile Post
37N01, 37N04	2 Roads open to all Vehicles, with Seasonal Designation	Seasonal Designation	08/01-11/30		
53039	6 Trails open to all vehicles, with Seasonal Designation	Seasonal Designation	01/01-12/31	0.000	1.050